

IS[®]

MCXTREMA RACING KIT

sparco[®]

HEADQUARTERS

SPARCO S.p.A.
Via Leinì, 524
10088 Volpiano (TO) - Italy
Tel. +39 011 22.40.911
e-mail: info@sparco.it - www.sparco-official.com

BRANCHES

SPARCO MOTOR SPORTS, INC. U.S.A.
1852 Kaiser Ave. - Irvine, CA 92614
Tel. (+1)-949-797-1750
www.sparcousa.com



sparco[®]

PERIMETER OF APPLICATION:

EUROPE AND REST OF THE WORLD

EXCLUDED USA AND CANADA

DAPINA
SUITS
KAGLING



MCXTREMA TOP SUIT

2.350,00 €
VAT NOT INCLUDED

HOMOLOGATION: FIA 8856-2018 - SFI 3.2A/5
SIZES: 48-66

FIA APPROVED
MANUFACTURER: SPARCO
MODEL: R564
HOM. NO: DC.142.21-O
FIA STANDARD: 8856-2018

MCXTREMA SUPER LIGHT SUIT

1.900,00 €
VAT NOT INCLUDED

HOMOLOGATION: FIA 8856-2018 - SFI 3.2A/5
SIZES: 48-66

FIA APPROVED
MANUFACTURER: SPARCO
MODEL: R564
HOM. NO: DC.142.21-O
FIA STANDARD: 8856-2018



**FULL FLOATING 360°
ARM GUSSETS**

**LARGE REAR
STRETCH PANEL**

**LADY FIT
AVAILABLE**

**EXTRACTION
HANDLE**

**LARGE REAR
STRETCH PANEL**

**LADY FIT
AVAILABLE**

REF: 001146SP

REF: 001142SP

D R A P I N G
SHOES
K A G U Y U G



MCXTREMA LACES SHOES

550,00 €
VAT NOT INCLUDED

HOMOLOGATION: FIA 8856-2018 - SFI 3.2/5
WEIGHT: 198 GR. (SIZE 42) **SIZES:** 37-47

APPROVED
MANUFACTURER: SPARCO
MODEL: R564
HOM. NO: DC.142.21-O
FIA STANDARD: 8856-2018



TRASPARENT SILICONE REINFORCEMENT

REAL FLEXIBLE CARBON INSOLE

OPT CARBON

REF: 0012A9

MCXTREMA STRAP SHOES

445,00 €
VAT NOT INCLUDED

HOMOLOGATION: FIA 8856-2018
WEIGHT: 210 GR. (SIZE 42) **SIZES:** 37-48

APPROVED
MANUFACTURER: SPARCO
MODEL: PRIME EVO
HOM. NO: DC.206.22-Z
FIA STANDARD: 8856-2018



SINGLE-LAYER STRETCH JACQUARD

REAL FLEXIBLE CARBON INSOLE

SINGLE-LAYER STRETCH JACQUARD TONGUE

REF: 001297SP



D R A P I N G
HELMETS
K A G U I N G

MCXTREMA FULL FACE HELMET

1.350,00 €
VAT .NOT INCLUDED

HOMOLOGATION: FIA 8859-2015 / SNELL SA 2020
SIZES: XS-XXL



- Double-sized shell and polystyrene with vents.
- Carbon Fiber shell reinforced with carbon-kevlar.
- New breathable fireproof jersey available in different colour options.
- Adjustable and washable interior.
- Drink System Ready.
- FIA homologated visor with continuous adjustment.
- Hans® clip.



REF: 003369SP

N.B.: THIS MODEL WILL BE VALID UNTIL MARCH 1ST, 2025

MCXTREMA OPEN HELMET

1.500,00 €
VAT .NOT INCLUDED

OMOLOGAZIONE: FIA 8859-2015 / SNELL SA 2020
TAGLIE: XS-XL



- Calotta e polistiroli in doppia misura con canali di ventilazione.
- Calotta in fibra di carbonio pre rinforzata con strati in carbon-kevlar.
- Nuova maglia traspirante ignifuga disponibile in diverse opzioni colore.
- Connessione mediante Nexus maschio di derivazione militare (connettore Nexus pressofuso).
- Clip Hans®.



003371ZRS..

REF: 003371SP

N.B.: THIS MODEL WILL BE VALID UNTIL MARCH 1ST, 2025

DAMPING
GLOVES
KAGULUYUG





MCXTREMA GLOVES

270,00 €
VAT NOT INCLUDED

HOMOLOGATION: FIA 8856/2018 - SFI 3.3/5
SIZES: 7-13

Compliant to the new FIA 8856-2018
heat transmission requirements.



MANUFACTURER: SPARCO
MODEL: ARROW+
HOM. NO: DC.301.23-G
FIA STANDARD: 8856-2018



HTX
FLAT PALM

TOUCH S ON
INDEX FINGER
AND THUMB

REF: 001319SP

DAPING

UNDERWEAR

KAAGUUGU

& bags

MCXTREMA TOP

230,00 €
VAT NOT INCLUDED

HOMOLOGATION: FIA 8856-2018 - SFI 3.3
SIZES:XS - S/M - L/XL - XXL



**SEAMLESS
CONSTRUCTION**

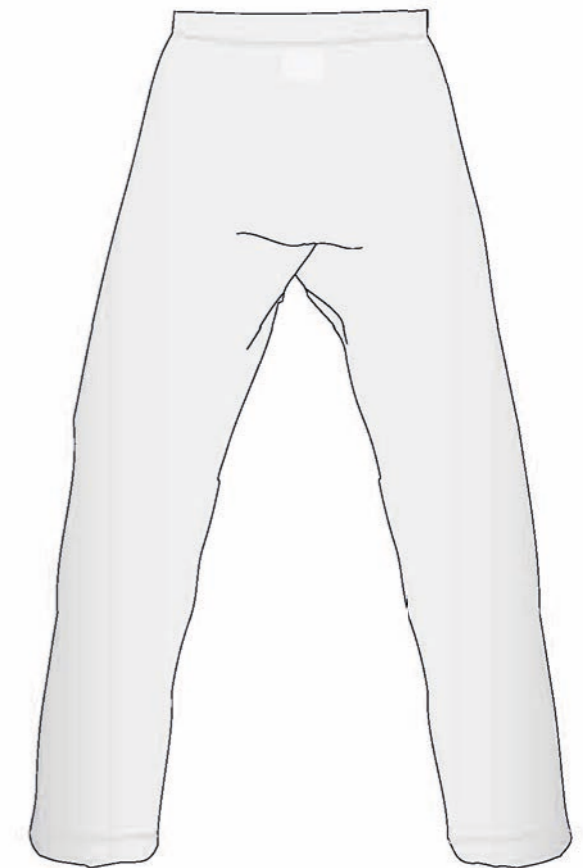
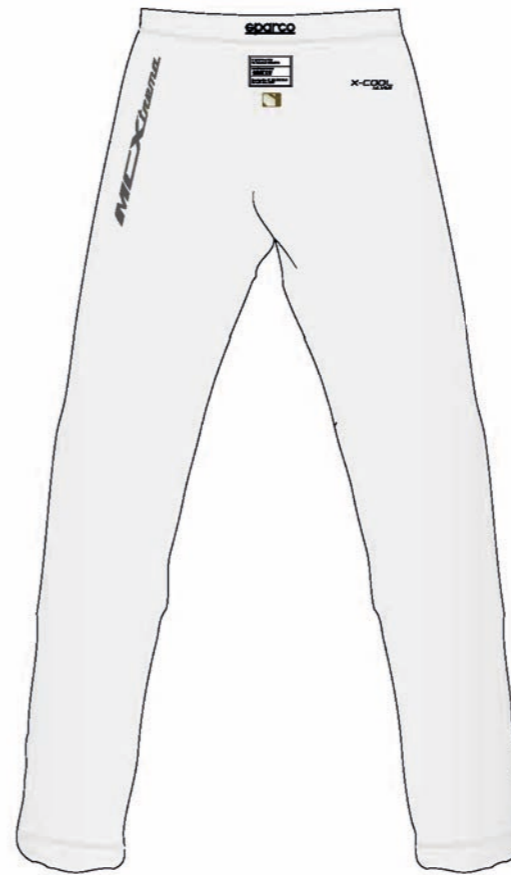
X-COOL TREATMENT

REF: 001786M

MCXTREMA BOTTOM

170,00 €
VAT NOT INCLUDED

HOMOLOGATION: FIA 8856-2018 - SFI 3.3
SIZES:XS/S - M/L - XL/XXL



**SEAMLESS
COSTRUCTION**

X-COOL TREATMENT

REF: 001769P

MCXTREMA BALACLAVA

102,00 €
VAT NOT INCLUDED

SIZES:ONESIZE



OPENING FOR
DRINK SYSTEM

SEAMLESS
FRONT CHIN

DOUBLE
ADJUSTABLE
CLOSURE

REF: 001407B0

MCXTREMA TROLLEY BAG BIG AND SMALL

DIMENSIONS: H40 X L84 X P38 CM
WEIGHT: 4,7 KG
CAPACITY: 127 LT
MATERIAL: COATED POLYESTER

DIMENSIONS: H25 X L55 X P35 CM
WEIGHT: 3 KG
CAPACITY: 48 LT
MATERIAL: COATED POLYESTER

165,00 €
VAT NOT INCLUDED

129,00 €
VAT NOT INCLUDED



PROTECTIVE
PADDING

TROLLEY WITH
REINFORCED
WHEELS

DOUBLE
ADJUSTABLE
CLOSURE

REF: 016437PE

REF: 016438PE

**PERIMETER OF APPLICATION:
EUROPE AND REST OF THE WORLD
EXCLUDED USA AND CANADA**

LEAD TIME: UNDER 4 WEEKS PRODUCTS WILL BE SUBJECT
TO A 30% INCREASE FROM THE LIST PRICE

CONTACTS:
D.VIGNALE@SPARCO.IT - GIANFRANCO.COLOMBI@SPARCO.IT

ALL REFERENCE PRICES DO NOT INCLUDE:
TRANSPORT COSTS, CUSTOMS DUTIES,
IMPORT CHARGES AND LOCAL TAXATION (VAT)